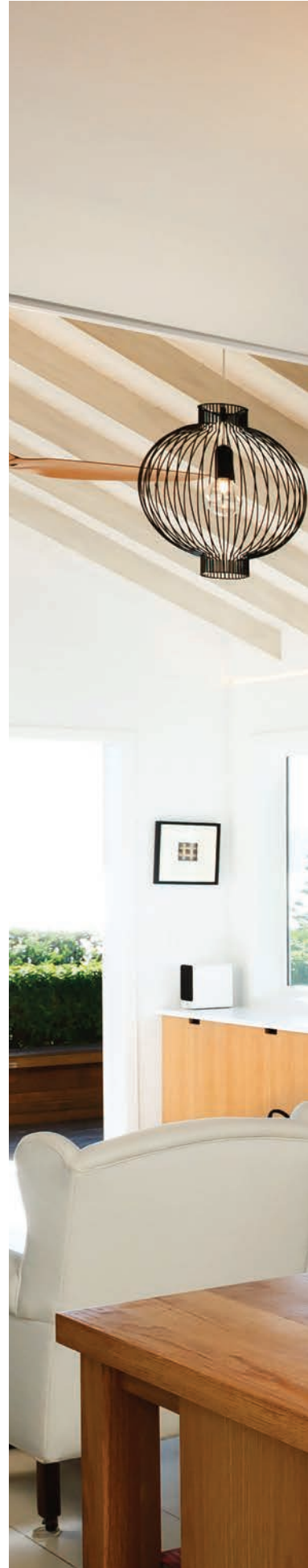


Architectural LED Series



DOWNHILL DAN	18
FLAT FREDDIE	22
TRIM TIM.....	23
SIDEWAYS SALLY	25
BOB EACH WAY	29
SONNY SIDE UP	30
SWEET 16.....	31
ANGLE ANDY.....	32
WHERE'S BEN.....	33
WATTS UP	35



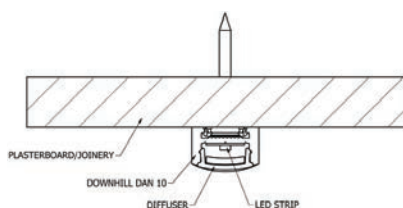
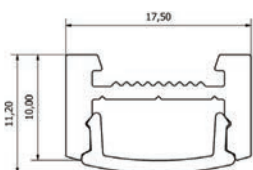


**LED
PROFILES**

DOWNHILL DAN 10



NOTE - Dotting visible due to extra low profile



FEATURES

- Surface, recessed or suspended mounting
- Unique mounting clip design for easy installation
- V-groove for accurate drilling and strip alignment
- Polycarbonate diffuser – UV resistant
- Straight joiners and L-plates
- Max. 14 W recessed, 20 W surface-mounted
- This product is not suitable for IP 65 LED strips

APPLICATIONS

- Under benches and shelving
- Concealed architectural detail / coving
- Furniture and joinery

DIMENSIONS

Width 17.5 mm x height 11.2 mm

FINISH

Anodised aluminium with polycarbonate diffuser

MOUNTING

Mounting clip system (not suitable for vertical mounting);
Optional screw fix.



EC-DD10-GR



CFS-12



JN-ST



JN-90



CB-60-W



SWK-1-2m

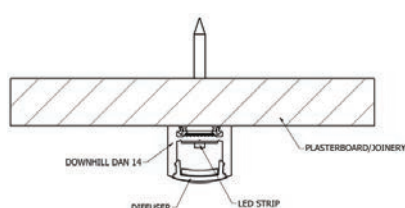
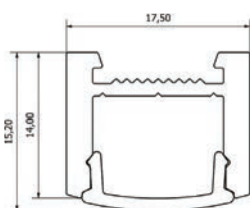
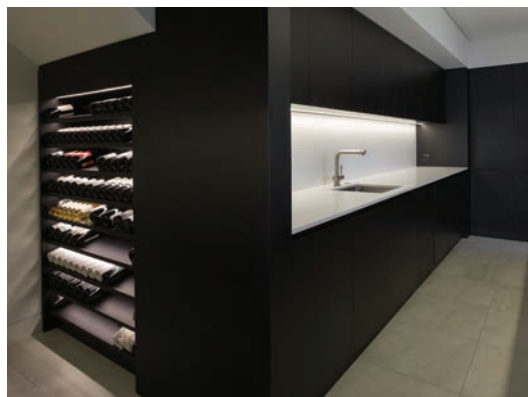


SRK-1
(Rod ordered
separately)



CFS-H12

DOWNHILL DAN 14



FEATURES

- Surface, recessed or suspended mounting
- Dot-free and uniform lighting
- Unique mounting clip design for easy installation
- V-groove for accurate drilling and strip alignment
- Polycarbonate diffuser – UV resistant
- Straight joiners and L-plates
- Max. 14 W recessed, 20 W surface-mounted
- IP 65 20 W strip not feasible

APPLICATIONS

- Under benches and shelving
- Task lighting
- Retail lighting
- Concealed architectural detail
- Furniture and joinery

DIMENSIONS

Width 17.5 mm x height 15.2 mm

FINISH

Anodised aluminium with polycarbonate diffuser.
Special powder-coat on request.

MOUNTING

Mounting clip system (not suitable for vertical mounting);
Optional screw fix.



EC-DD14-GR



CFS-12



JN-ST



JN-90



CB-60-W



SWK-1-2m

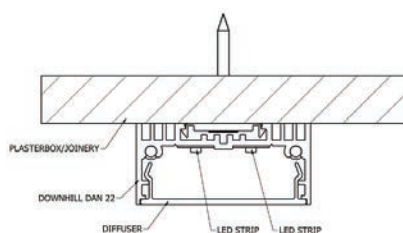
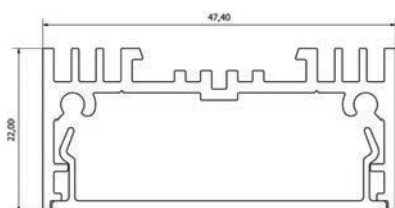
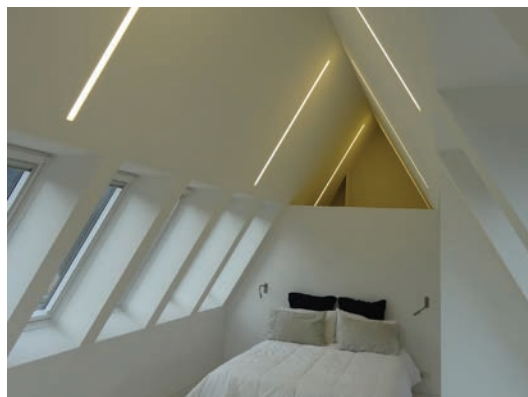


SRK-1
(Rod ordered separately)



CFS-H12

DOWNHILL DAN 22



FEATURES

- Surface, recessed or suspended mounting
- Unique mounting clip design for easy installation
- V-groove for accurate drilling and strip alignment
- Polycarbonate diffuser – UV resistant
- Max. 2 x 14 W recessed, 2 x 20 W surface-mounted
- IP 65 20 W strip not feasible

APPLICATIONS

- Under benches and shelving
- Task lighting
- Retail lighting
- Concealed architectural detail
- Furniture and joinery
- Ambient lighting

DIMENSIONS

Width 47.4 mm x height 22 mm

FINISH

Anodised aluminium with polycarbonate diffuser.
Special powder-coat on request.

MOUNTING

Mounting clip system (not suitable for vertical mounting);
Optional screw fix.



EC-DD22-SA



MC-23



JN-ST-23



JN-90-23



CB-60-W

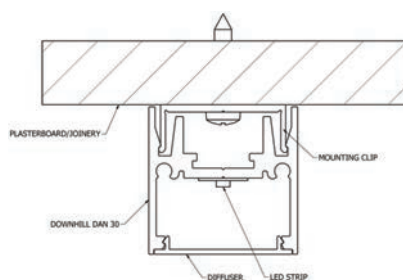
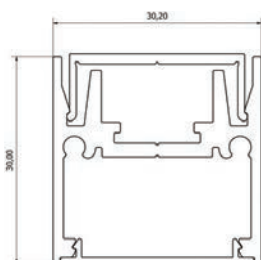
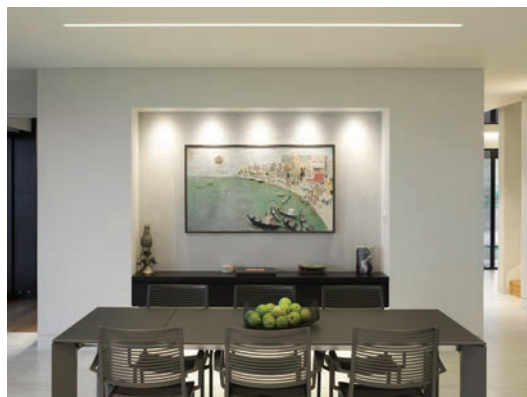
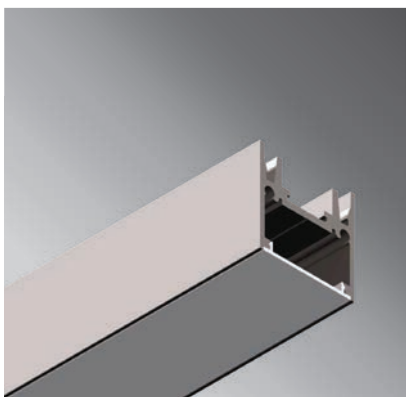


SWK22-1-2m



SRK-2
(Rod ordered separately)

DOWNHILL DAN 30



FEATURES

- Surface, recessed or suspended mounting
- Dot-free and uniform lighting
- Unique mounting clip design for easy installation
- V-groove for accurate drilling and strip alignment
- Polycarbonate diffuser – UV resistant
- Max. 30 W per metre
- IP 65 20 W strip not feasible
- Aluminium or ABS plastic end caps

APPLICATIONS

- General interior lighting
- Retail, residential or commercial lighting

DIMENSIONS

Width 30.2 mm x height 30 mm

FINISH

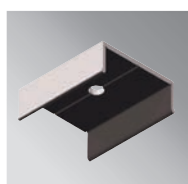
Anodised aluminium with polycarbonate diffuser
Special powder-coat on request.

MOUNTING

Mounting clip system
Do not use mounting clips on overhead installations, screw fixing is required.



EC-DD30-SA
EC-DD30-GR



MC-30



JN-ST-12



JN-90-12



CB-60-W

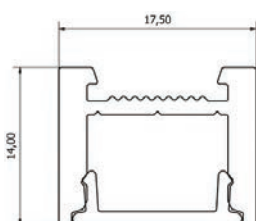
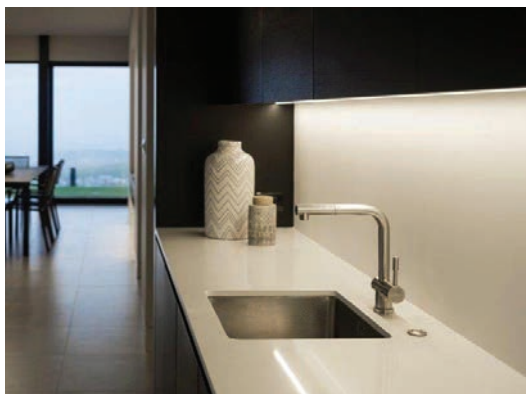


SWK-1-2m



SRK-1
(Rod ordered separately)

FLAT FREDDIE 14



FEATURES

- Surface, recessed or suspended mounting
- Unique mounting clip design for easy installation
- V-groove for accurate drilling and strip alignment
- Polycarbonate diffuser – UV resistant
- Max. 14 W recessed, 20 W surface-mounted
- IP 65 20 W strip not feasible

APPLICATIONS

- Under benches and shelving
- Concealed architectural detail
- Furniture and joinery

DIMENSIONS

Width 17.5 mm x height 14 mm

FINISH

Anodised aluminium with polycarbonate diffuser
Special powder-coat on request.

MOUNTING

Mounting clip system (not suitable for vertical mounting);
Optional screw fix.



EC-FF14-GR



CFS-12



JN-ST



JN-90



CB-60-W

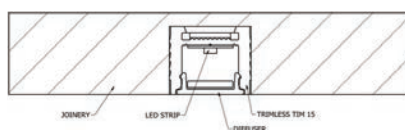
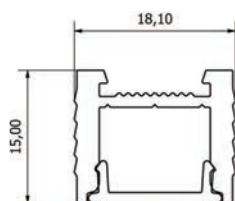


SWK-1-2m



SRK-1
(Rod ordered separately)

TRIMLESS TIM 15



FEATURES

- Trimless recessed mounting - friction fit
- Dot-free and uniform lighting
- V-groove for accurate drilling and strip alignment
- Flat and discrete diffuser
- Polycarbonate diffuser – UV resistant
- Max. 14 W per metre

APPLICATIONS

- Under benches and shelving
- Retail lighting
- Concealed architectural detail
- Furniture and joinery

DIMENSIONS

Width 18.1 mm x height 15 mm

FINISH

Anodised aluminium with polycarbonate diffuser

MOUNTING

Friction fit into cabinetry recess



EC-TT15-GR

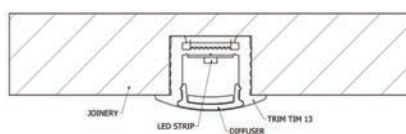
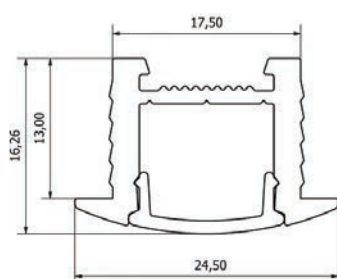


JN-ST



JN-90

TRIM TIM 13



FEATURES

- Recessed mounting - friction fit
- Dot-free and uniform lighting
- V-groove for accurate drilling and strip alignment
- Polycarbonate diffuser – UV resistant
- Max. 14 W per metre

APPLICATIONS

- Under benches and shelving
- Retail lighting
- Concealed architectural detail
- Furniture and joinery

DIMENSIONS

Width 17.5 mm x height 13 mm

FINISH

Anodised aluminium with polycarbonate diffuser

MOUNTING

Friction fit into cabinetry recess



EC-TT13-GR

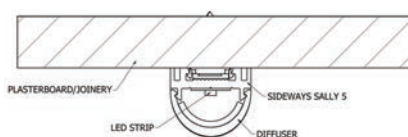
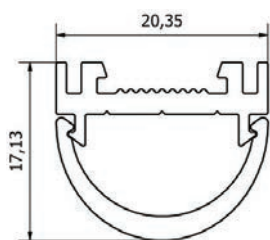


JN-ST



JN-90

SIDEWAYS SALLY 5C



FEATURES

- Surface mounting
- Dot-free and uniform lighting
- Unique mounting clip design for easy installation
- V-groove for accurate drilling and strip alignment
- PMMA diffuser – scratch and mark resistant
- Max. 20 W per metre
- This product is not suitable for IP 65 LED strip

APPLICATIONS

- Task and ceiling lighting
- Wall and mirror lighting
- Retail lighting
- Furniture and joinery

DIMENSIONS

Width 20.35 mm x height 17.13 mm

FINISH

Anodised aluminium with PMMA diffuser.
Special powder-coat on request.

MOUNTING

Mounting clip system



EC-SS5-C-GR



CFS-12



JN-ST



JN-90



CB-60-W



SWK-1-2m

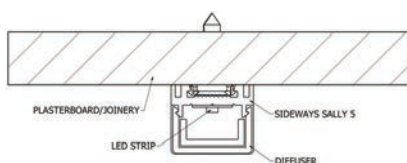
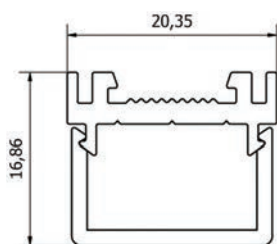


SRK-1
(Rod ordered separately)



CFS-H12

SIDEWAYS SALLY 5R



FEATURES

- Surface mounting
- Dot-free and uniform lighting
- Unique mounting clip design for easy installation
- V-groove for accurate drilling and strip alignment
- PMMA diffuser – scratch and mark resistant
- Max. 20 W per metre
- This product is not suitable for IP 65 LED strip

APPLICATIONS

- Task and ceiling lighting
- Wall and mirror lighting
- Retail lighting
- Furniture and joinery

DIMENSIONS

Width 20.35 mm x height 16.86 mm

FINISH

Anodised aluminium with PMMA diffuser.
Special powder-coat on request.

MOUNTING

Mounting clip system



EC-SS5-R-GR



CFS-12



JN-ST



JN-90



CB-60-W



SWK-1-2m

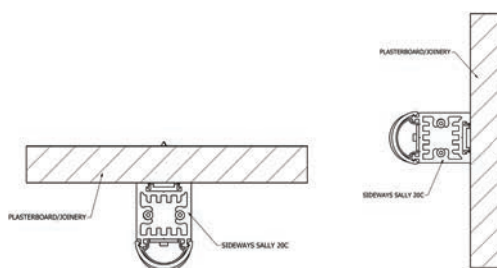
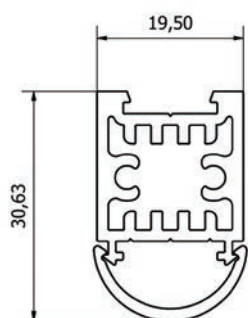
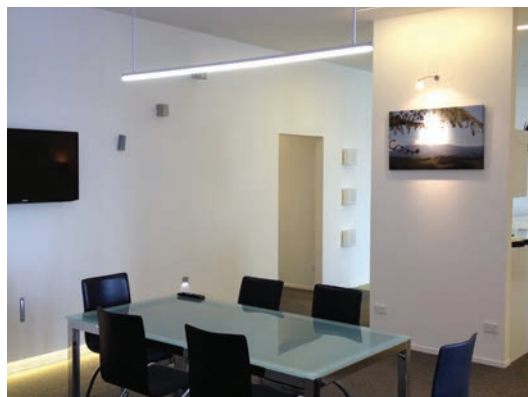


SRK-1
(Rod ordered separately)



CFS-H12

SIDEWAYS SALLY 20C



FEATURES

- Surface or suspended mounting
- Indirect / direct option
- Dot-free and uniform lighting
- Unique mounting clip design for easy installation
- V-groove for accurate drilling and strip alignment
- PMMA diffuser – scratch and mark resistant
- Max. 14 W upward, 20 W downward
- This product is not suitable for IP 65 LED strip

DIMENSIONS

Width 19.5 mm x height 30.63 mm

FINISH

Anodised aluminium with PMMA diffuser.
Special powder-coat on request.

MOUNTING

Mounting clip system

APPLICATIONS

- Task and ceiling lighting
- Wall and mirror lighting
- Retail lighting
- Furniture and joinery



EC-SS20-SA-C



CFS-12



JN-ST-12



JN-90-12



CB-60-W

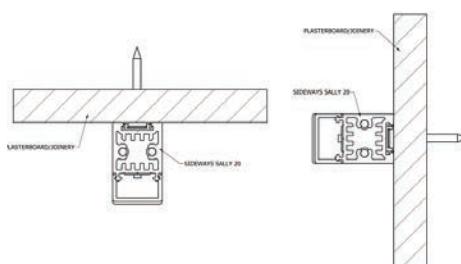
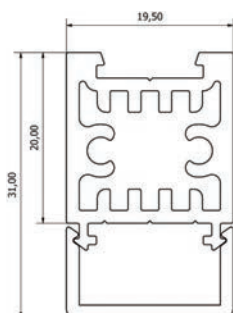
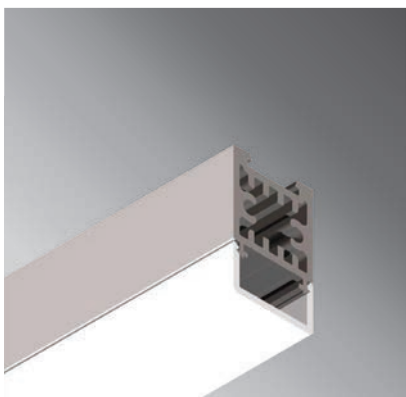


SWK-1-2m



SRK-1
(Rod ordered separately)

SIDEWAYS SALLY 20R



FEATURES

- Surface or suspended mounting
- Indirect / direct option
- Dot-free and uniform lighting
- Unique mounting clip design for easy installation
- V-groove for accurate drilling and strip alignment
- PMMA diffuser – scratch and mark resistant
- Max. 14 W upward, 20 W downward
- This product is not suitable for IP 65 LED strip

APPLICATIONS

- Task and ceiling lighting
- Wall and mirror lighting
- Retail lighting
- Furniture and joinery

DIMENSIONS

Width 19.5 mm x height 31 mm

FINISH

Anodised aluminium with PMMA diffuser.
Special powder-coat on request.

MOUNTING

Mounting clip system



EC-SS20-SA-R



CFS-12



JN-ST-12



JN-90-12



CB-60-W

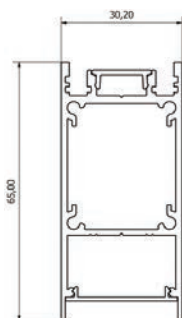
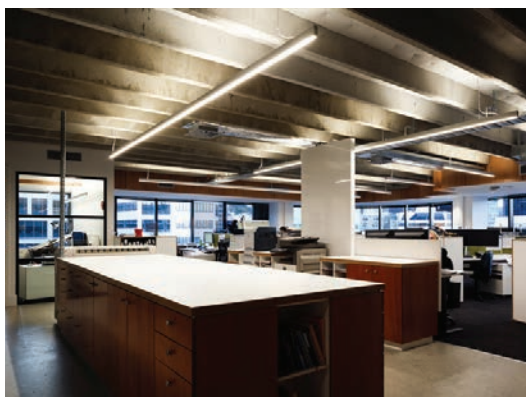


SWK-1-2m



SRK-1
(Rod ordered separately)

BOB EACH WAY 65



FEATURES

- Suspended mounting
- Indirect / direct option
- Polycarbonate diffuser – UV resistant
- Max. 20 W upward, 30 W downward
- IP 65 20 W strip not feasible

APPLICATIONS

- Retail lighting
- Furniture and joinery
- General lighting
- Task and ceiling lighting

DIMENSIONS

Width 30.2 mm x height 65 mm

FINISH

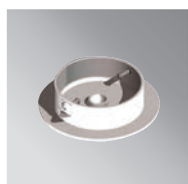
Anodised aluminium with polycarbonate diffuser.
Special powder-coat on request.

MOUNTING

Wire or rod suspended



EC-BEW-SA



CB-BEW-60-W



SWK-5-2m

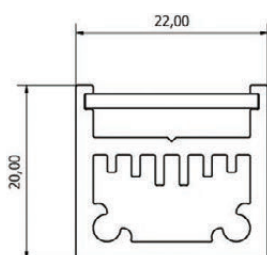


SRK-5
(Rod ordered separately)



Joiner - JN-ST-6
Locator Plate - JN-LOC

SONNY SIDE UP 22



FEATURES

- Suspended mounting
- Unique mounting clip design for easy installation
- Clear diffuser - scratch and mark resistant
- Max. 40 W per metre
- This product is not suitable for IP 65 LED strip

APPLICATIONS

- Indirect / suspended lighting

DIMENSIONS

Width 22 mm x height 20 mm

FINISH

Anodised aluminium with polycarbonate diffuser.
Special powder-coat on request.

MOUNTING

Wire or rod suspension



EC-SSU22-SA



JN-ST-18



CB-60-W

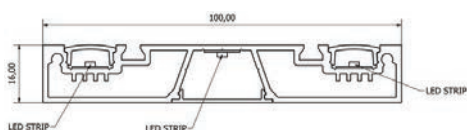


SWK-4-2m



SRK-3
(Rod ordered
separately)

SWEET 16



FEATURES

- Suspended mounting
- Indirect / direct option
- Dot-free and uniform lighting
- PMMA diffuser – scratch and mark resistant
- Max. 2 x 20 W upward, 1 x 14 W downward
- This product is not suitable for IP 65 LED strip

APPLICATIONS

- Task and ceiling lighting
- Retail lighting
- Meeting rooms and board rooms
- Reception areas

DIMENSIONS

Width 100 mm x height 16 mm

FINISH

Anodised aluminium with polycarbonate diffuser.
Special powder-coat on request.

MOUNTING

Wire or rod suspension



EC-S16-SA



CB-S16-60-W



JN-ST-6



JN-90-6

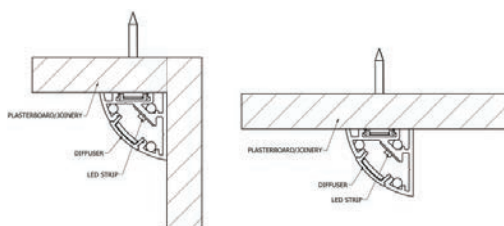
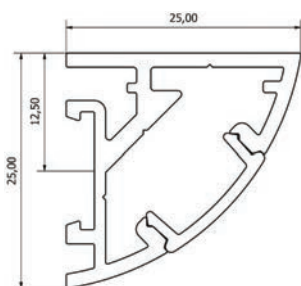
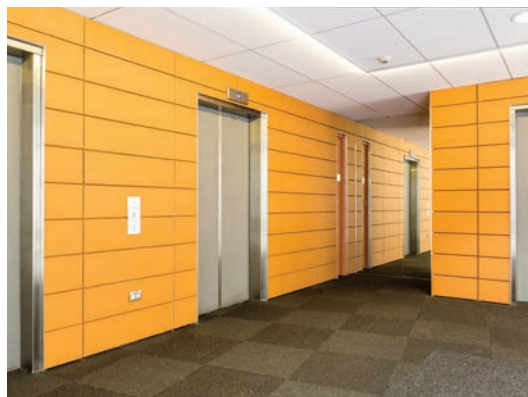
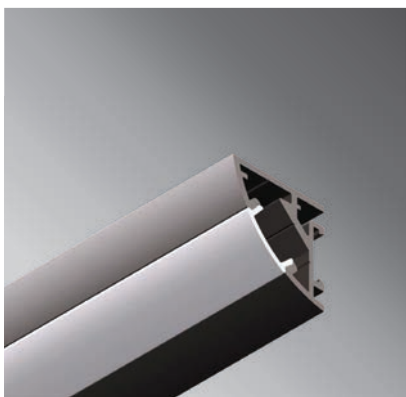


SWK-V2



SRK-3
(Rod ordered separately)

ANGLE ANDY 25



FEATURES

- Surface mounting
- Unique mounting clip design for easy installation
- V-groove for accurate drilling and strip alignment
- Polycarbonate diffuser – UV resistant
- Max. 20 W per metre
- IP 65 20 W strip not feasible

APPLICATIONS

- Under benches and shelving
- Wall or ceiling washing
- Retail lighting
- Furniture and joinery

DIMENSIONS

Width 25 mm x height 25 mm

FINISH

Anodised aluminium with polycarbonate diffuser.
Special powder-coat on request.

MOUNTING

Mounting clip system



EC-AA25-GR



CFS-12



JN-ST-12



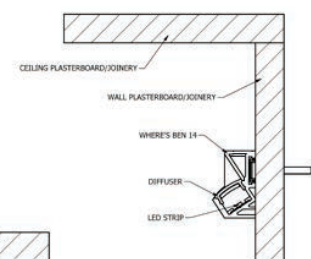
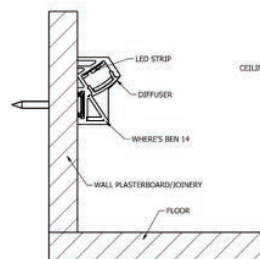
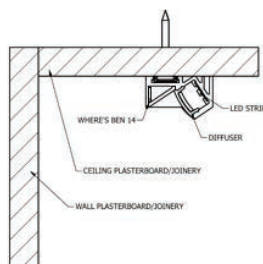
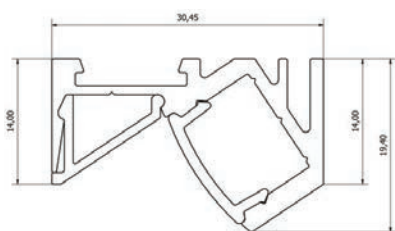
JN-90-12



CFS-H12



WHERE'S BEN 14



FEATURES

- Recessed or surface mounting
- Asymmetric distribution
- Dot-free and uniform lighting
- V-groove for accurate drilling and strip alignment
- Polycarbonate diffuser – UV resistant
- Max. 14 W recessed, 20 W surface-mounted
- IP 65 20 W strip not feasible

APPLICATIONS

- Under benches and shelving
- Task lighting
- Concealed architectural detail
- Furniture and joinery
- Wall or ceiling washing

DIMENSIONS

Width 30.45 mm x height 19.4 mm

FINISH

Anodised aluminium with polycarbonate diffuser.
Special powder-coat on request.

MOUNTING

Screw fix (supplied)



EC-WB14-GR



JN-ST-12

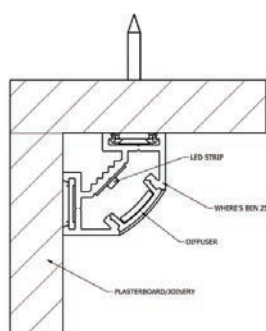
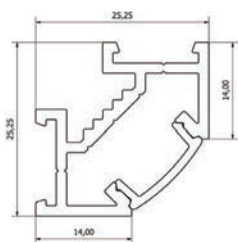
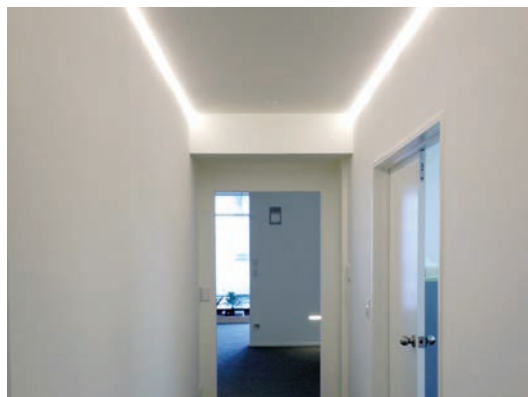


JN-90-12



CFS-H12

WHERE'S BEN 25



FEATURES

- Corner surface mounting
- Dot-free and uniform lighting
- V-groove for accurate drilling and strip alignment
- Polycarbonate diffuser – UV resistant
- Max. 20 W per metre
- IP 65 20 W strip not feasible

APPLICATIONS

- Under benches and shelving
- Wall or ceiling washing
- Retail lighting
- Furniture and joinery

DIMENSIONS

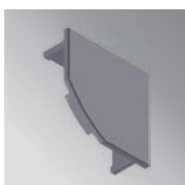
Width 25.25 mm x height 25.25 mm

FINISH

Anodised aluminium with polycarbonate diffuser.
Special powder-coat on request.

MOUNTING

Mounting clip system or screw fix



EC-WB25-GR



CFS-12

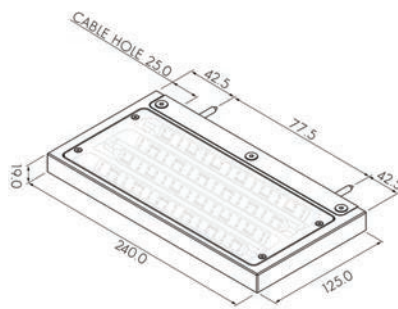
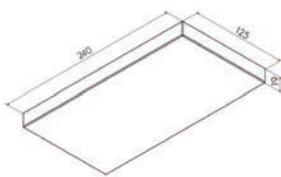


JN-ST-12



JN-90-12

WATTS UP 240



FEATURES

- Surface wall mounting
- Indirect lighting
- Polycarbonate diffuser – UV resistant

APPLICATIONS

- Retail lighting
- Reception areas
- Foyers

DIMENSIONS

Width 240 mm x depth 125 mm

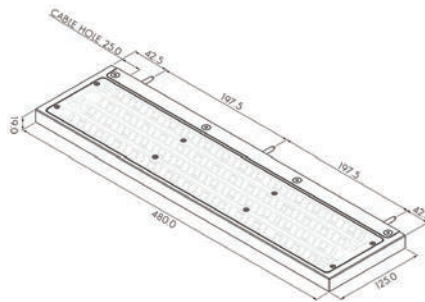
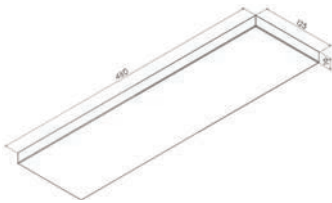
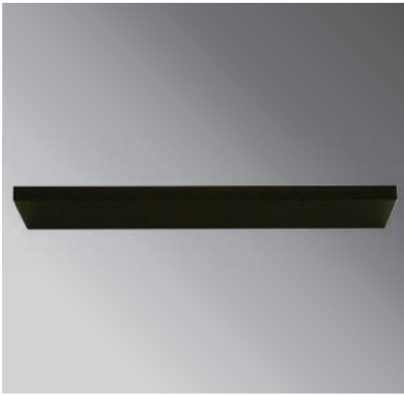
FINISH

White powder-coated aluminium.
Special powder-coat on request.

MOUNTING

Screw fix to wall

WATTS UP 480



FEATURES

- Surface wall mounting
- Indirect lighting
- Polycarbonate diffuser – UV resistant

APPLICATIONS

- Retail lighting
- Reception areas
- Foyers

DIMENSIONS

Width 480 mm x depth 125 mm

FINISH

White powder-coated aluminium.
Special powder-coat on request.

MOUNTING

Screw fix to wall



CONTACT

LIGHTING OPTIONS AUSTRALIA

ADDRESS

50 KENT STREET
CANNINGTON, WA, 6107
AUSTRALIA

PHONE (+61) 8 6142 4977
FAX (+61) 8 9258 3487
E-MAIL admin@lightingoptionsaustralia.com.au
WEBSITE www.lightingoptionsaustralia.com.au

